

Refining severe disease models and procedures



FOCUS ON 
SEVERE SUFFERING

24-25 August 2022

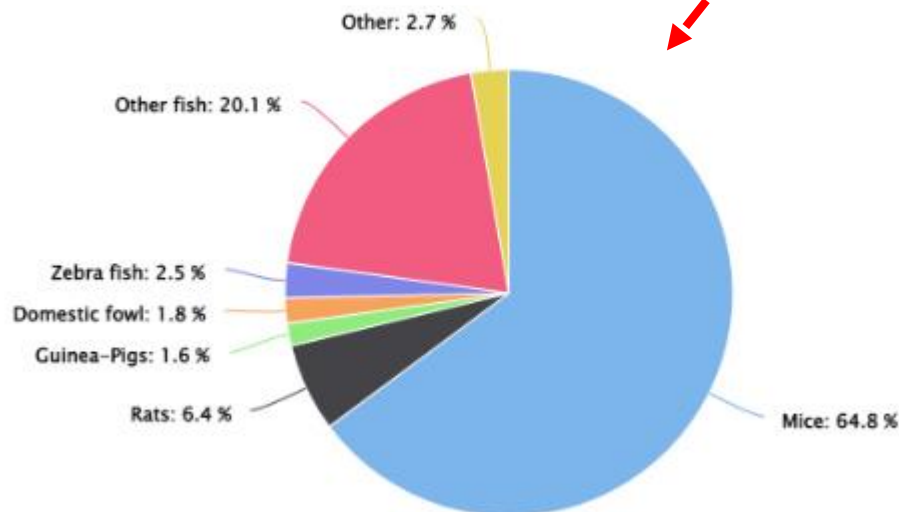


in association with



**Karolinska
Institutet**

	2017	2018 (EU-28 incl. NO)	2019 (EU-28 incl. NO)
Non-recovery	6% (621,054)	6% (612,094)	6% (586,373)
Mild [up to and including]	51% (4,865,721)	50% (5,469,214)	52% (5,512,134)
Moderate	32% (3,071,828)	34% (3,658,621)	33% (3,510,993)
Severe	11% (1,023,138)	10% (1,064,925)	9% (999,264)
Total	100% (9,581,741)	100% (10,804,854)	100% (10,608,764)



Highcharts.com

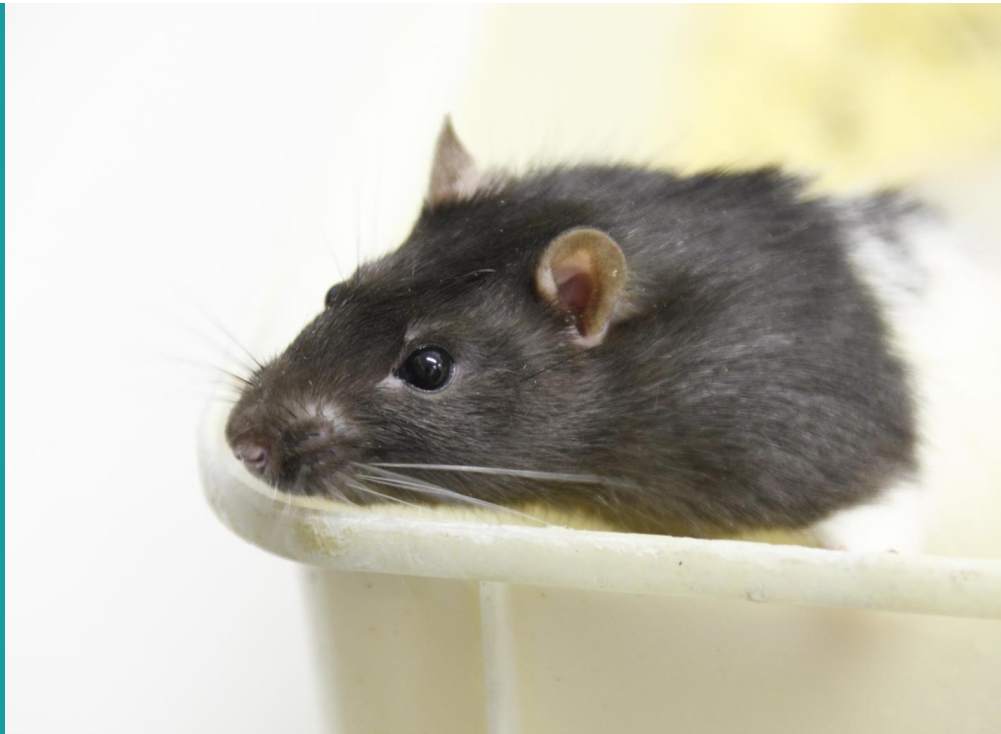
Member State	Uses of animals causing 'severe' suffering	% of total use
AUSTRIA	20245	9.24
BELGIUM	63134	14.20
BULGARIA	0	0.00
CROATIA	2253	8.07
CYPRUS	0	0.00
CZECHIA	30653	12.98
DENMARK	4112	1.65
ESTONIA	0	0.00
FINLAND	6368	6.86
FRANCE	258440	14.55
GERMANY	97024	5.23
GREECE	12817	26.78
HUNGARY	19831	14.64
IRELAND	18543	13.39
ITALY	112087	20.37
LATVIA	82	1.93
LITHUANIA	0	0.00
LUXEMBOURG	344	3.08
MALTA	0	0.00
NETHERLANDS	4811	1.26
POLAND	83626	29.57
PORTUGAL	11170	14.82
ROMANIA	1055	7.75
SLOVAKIA	952	5.31
SLOVENIA	57	1.07
SPAIN	60119	7.94
SWEDEN	26842	11.39
NORWAY	91434	7.20
UK (GB+NI)	73265	4.18
EU + Norway total	999264	9.42

10M *

animals across the world
experience severe suffering
each year



*estimate





Today

- Introduction
- Before starting projects
- Case studies in basic and applied research
- Keynote - How does rodent housing affect severity and mortality?
- Networking opportunity

Tomorrow

- Reviewing actions - during and at the end of projects
- Case studies in regulatory testing
- Supporting future progress - EFPIA, International CoC Network, ESLAV, AAALAC